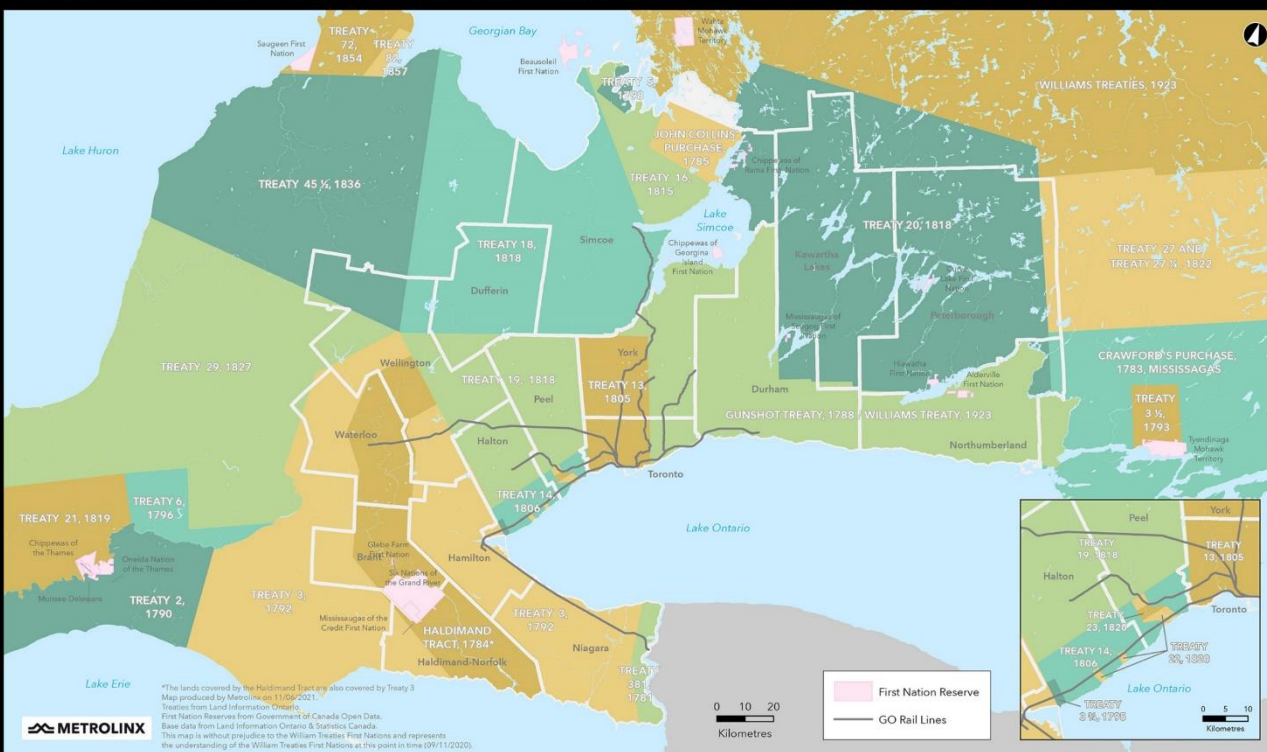


Land Acknowledgement

Treaties and Reserves in the Greater Golden Horseshoe



Let us take a moment to acknowledge we are on lands that have been, and continue to be, home to many Indigenous Peoples including the Anishnabeg, the Haudenosaunee and the Huron-Wendat peoples.

We are all Treaty people. Many of us have come here as settlers, as immigrants or involuntarily as part of the trans-Atlantic slave trade, in this generation, or generations past.

We acknowledge the historic and continued impacts of colonization and the need to work towards meaningful reconciliation with the original caretakers of this land.

We acknowledge that Metrolinx operates on territories and lands covered by many treaties that affirm and value the rights of Indigenous communities, Nations and Peoples.

We understand the importance of working towards reconciliation with the original caretakers of this land. At Metrolinx, we will conduct business in a manner that is built on a foundation of trust, respect and collaboration.

Ontario Line

Construction Liaison Committee

Pape-Danforth & Sammon

November 6, 2024

AGENDA

1. Ongoing Work

- Pape Station SOE
- Sammon Crossover SOE

2. Upcoming Work

- Sammon Crossover Excavation

3. Site Improvements and Issue Mitigations

- Generator demobilization and temporary power
- Site layout improvements
- Wet sweeper truck schedules and routes
- Commercial window washing
- Artwork installation

4. Noise and Air Quality Data

- September noise exceedances
- September dust incident, data, and dust control measures

5. Action Log

6. Discussion

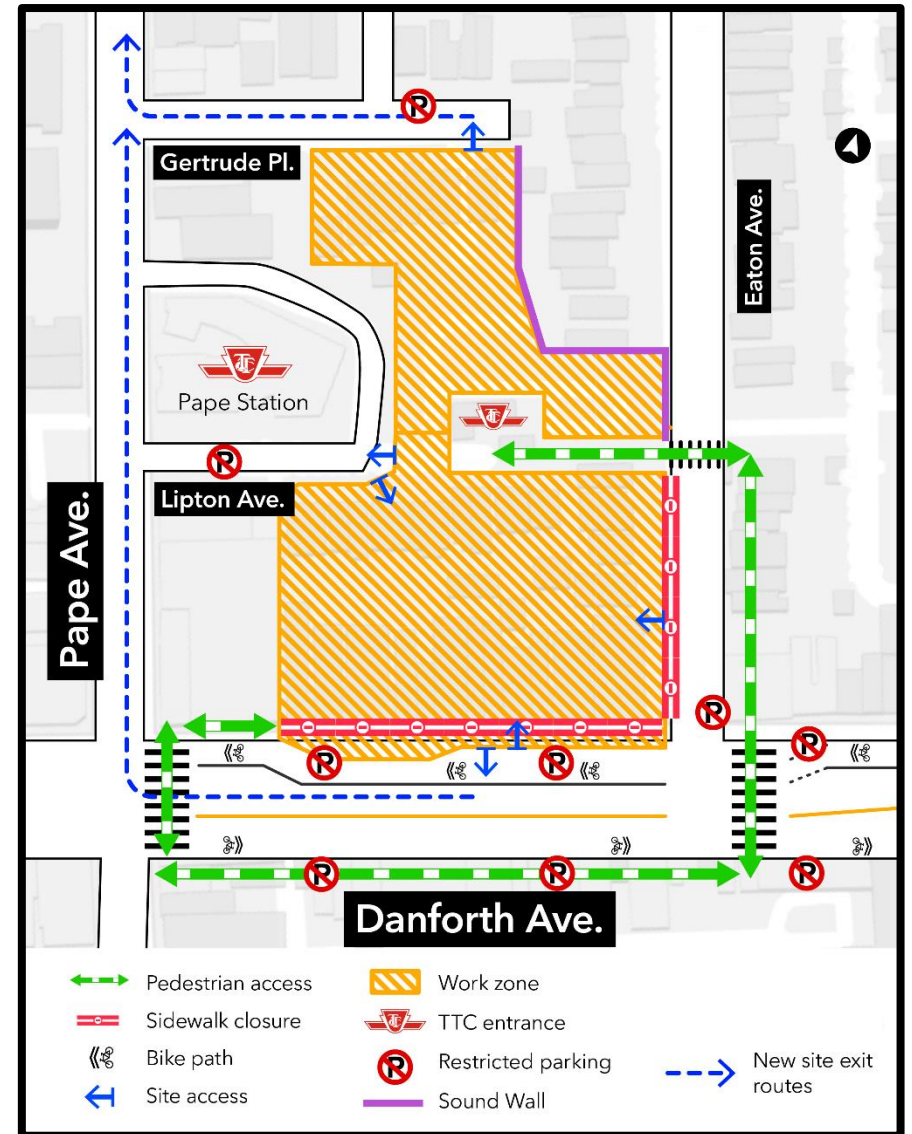
Ongoing Work

Support of Excavation – Pape Station

- Construction on the underground concrete support walls (slurry walls) for the future Ontario Line interchange at Pape Station.
- Sidewalk and traffic detours, parking restrictions, and temporary crosswalks are in place to accommodate construction and allow for safe navigation around the site.
- Extended work hours are required to accommodate the time concrete needs to dry. This keeps the work safe by establishing trench stability.
- Support of excavation for Pape Station is currently scheduled to be completed in early spring 2025.
- Following support of excavation, bulk excavation will begin. More details will be shared about Pape Station excavation at a future meeting.

Hours of work:

- Monday - Friday - 24 hours
- Saturdays from 6 a.m. - 7 p.m.



Pape-Danforth Slurry Wall Installation Progress

South slurry wall

- Installation of the south slurry wall is 55% complete.
- Crews have excavated about 9,935 cubic metres of soil
- Over 10,268 cubic metres of concrete poured

32

Panels installed

26

Panels remaining



North slurry wall

- Installation of the north slurry wall is 22% complete.
- Crews have excavated about 4,187 cubic metres of soil
- Over 4,425 cubic metres of concrete poured

11

Panels installed

39

Panels remaining

Pape Support of Excavation – Danforth Avenue



Lifting a rebar cage before inserting into excavated panel



Building Pape north guidewall



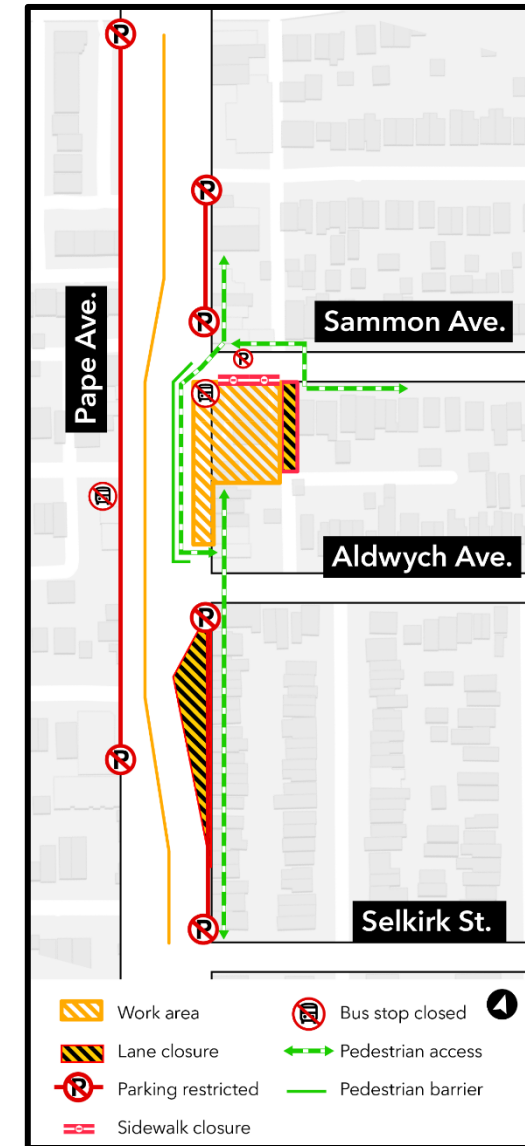
Excavating panel in Pape north shaft

Support of Excavation – Sammon EEB

- Construction of the underground concrete support walls (known as support of excavation) for the future Ontario Line emergency exit building (EEB) at Sammon Avenue is ongoing.
- Sidewalk and traffic detours, as well as parking restrictions are in place to accommodate construction and allow for safe navigation around the site.
- Extended work hours are required to accommodate the time concrete needs to dry. This keeps the work safe by establishing trench stability.
- Support of excavation for the Sammon EEB is currently scheduled for completion by early 2025.
- Following support of excavation, bulk excavation will begin. More details are available on an upcoming slide.

Hours of work:

- Monday - Friday - 24 hours
- Saturdays from 6 a.m. - 7 p.m.



Sammon Slurry Wall progress

- Installation of the Sammon slurry wall is 57% complete.
- Crews have excavated about 4,655 cubic metres of soil
- Over 4,436 cubic metres of concrete poured

16

Panels installed

12

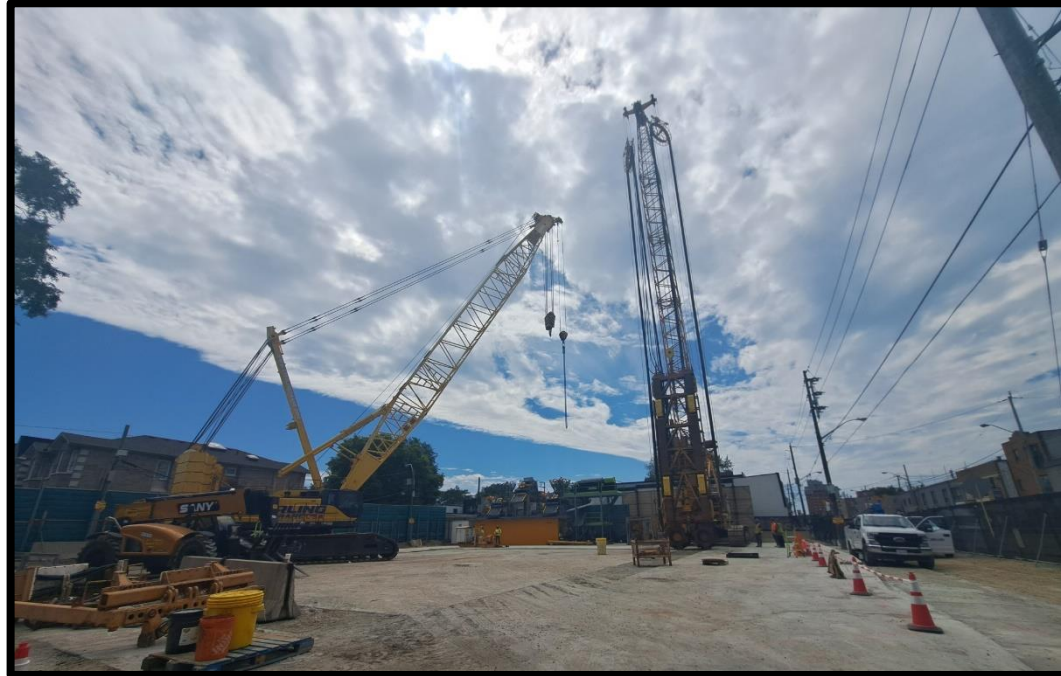
Panels remaining



Pape Support of Excavation – Sammon Avenue



Excavating panel at Sammon



A crane and hydromill at the Sammon site



Carefully placing a rebar cage into the excavated panel

Upcoming Work

Bulk Excavation at Sammon Avenue

- Upon completion of the installation of the slurry walls, crews will begin to excavate within the foundation box formed by the slurry walls.
- Approximately 30 trucks per day will be leaving the site to haul excavated material.
- All staging will be done within the existing site footprint.
- Truck haul routes will be on Pape Avenue from the site to O'Connor Drive, for both inbound and outbound trucks.

Hours of work:

- Excavation until Summer 2025
- Monday - Friday over 24 hours, if required
- Saturdays from 6 a.m. - 7 p.m.

Site Improvements and Issue Mitigations

Replacing generators with electrical power

Starting in late November, 7 of 9 generators will be removed from the Pape-Danforth site.

What's going electric?

- Site lighting and cameras
- Water treatment plant, including pumps
- Jet grout pump and plant station
- Power for worker trailers, change rooms, washrooms
- Heat for water treatment plant and trenches, lines, hydrants
- Grout pipes shed
- Other site equipment that supports slurry wall construction.



This will replace:

7
Generators

- Across the Pape-Danforth site

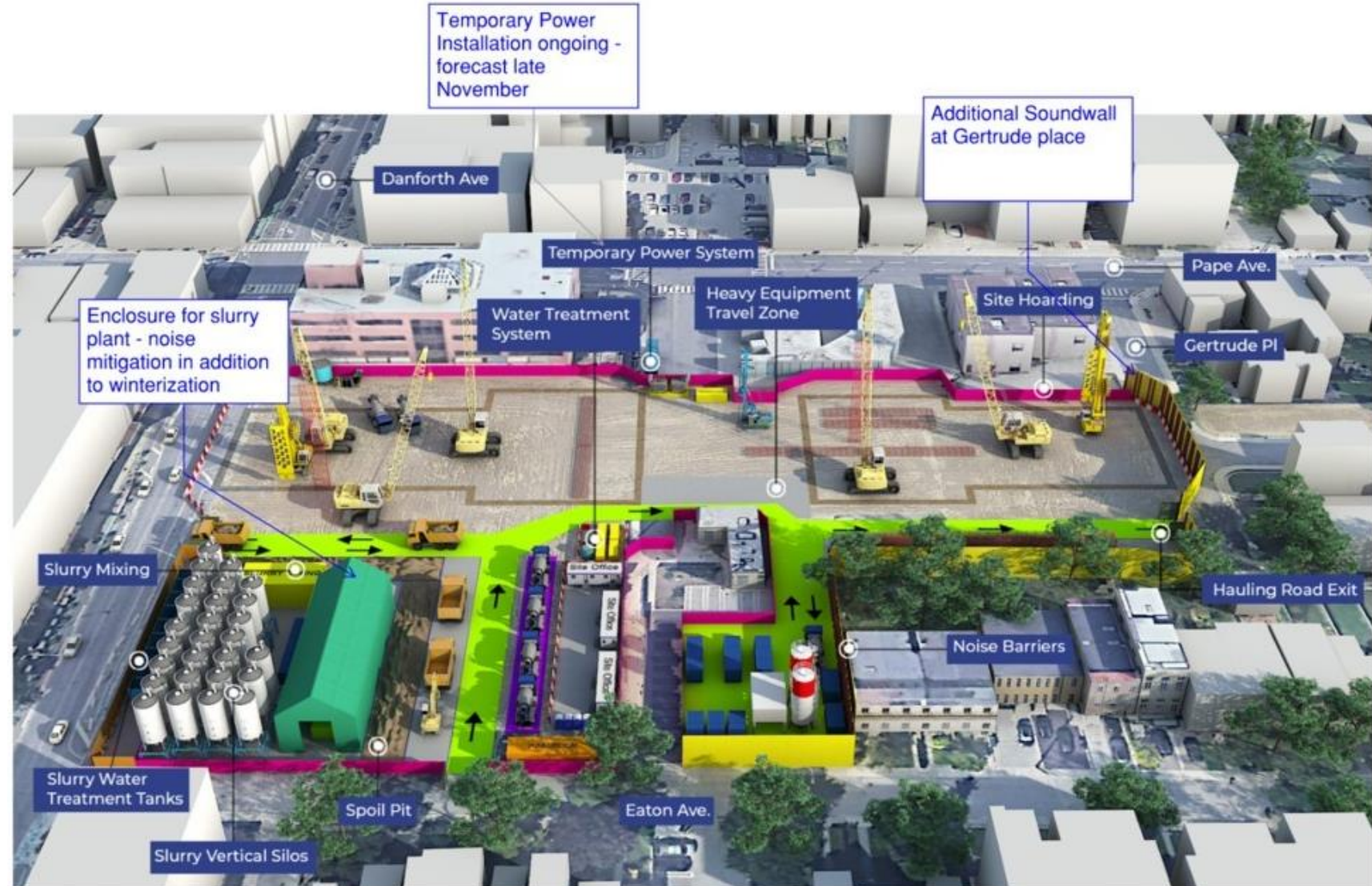
Remaining at Pape-Danforth:

2
Generators

- Powering the slurry plant (to be removed in April 2025)

Pape-Danforth Site Layout Improvements

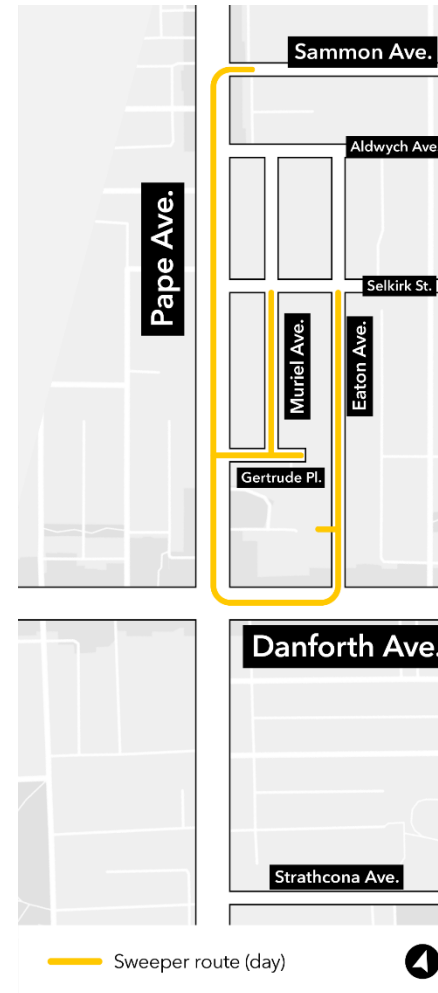
- Adjustment to the site layout for additional lands received
- Temporary power
- Enclosure for winterization/ noise mitigation
- Additional noise barrier along Gertrude Place
- Concrete pads installed along all hauling routes on site



Sweeper Truck Shifts and Route

- The sweeper trucks have been given strict instructions to not drive down residential streets at night.
- The daytime and nighttime shifts the sweeper trucks take can be seen in the images on the right. The routes have been highlighted in yellow and blue.

Day Shift: 12pm-7pm



Night Shift: 7pm-2am



Contractor Window Washing on Danforth Avenue

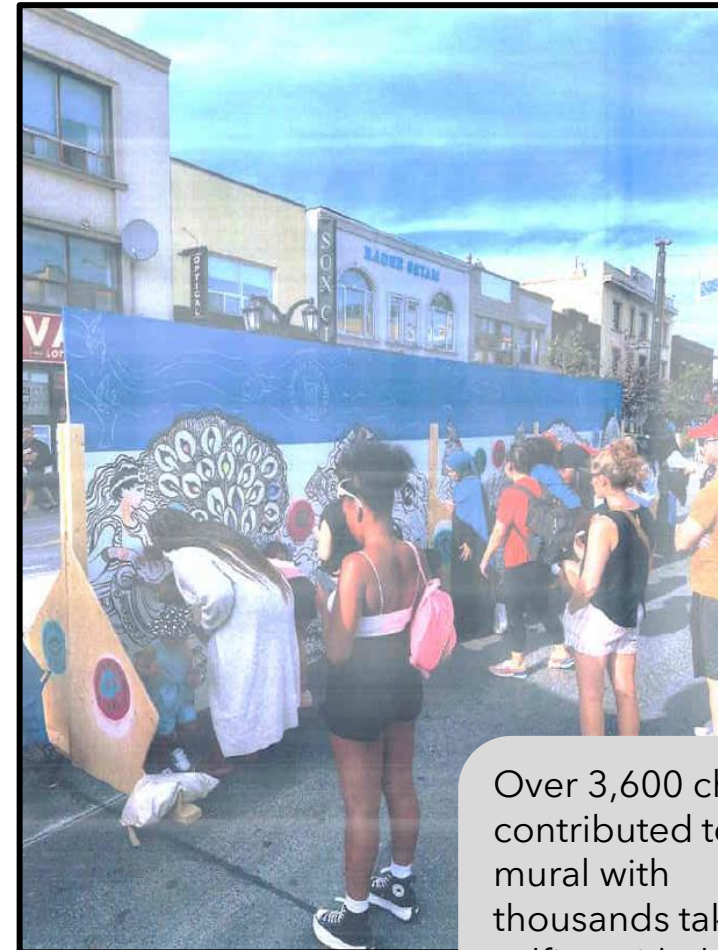
- GIP and the BIA have agreed to initiate a window cleaning program along Danforth Avenue to support local businesses following a monthly project site walk with the BIA representative.



Installation of Artwork along Danforth Avenue



In 2003, at the Taste of the Danforth Kid Zone, the GreekTown on the Danforth BIA worked with local artist Monica Wickeler to create community-engaged art that would build the conversation around how people see their city and their sense of belonging.



Over 3,600 children contributed to the mural with thousands taking selfies with the "selfie wings"

About the Artist



Monica Wickeler: Also known as **@monicaonthemoon** in the public art industry.

When Monica isn't found on tip-toes at the top of scaffolding or balancing a ladder just so to reach the top corner of a mural, she can be found sharing her joy of mural/street art with school students and sharing how it can transform a community.

Noise and Air Quality Data

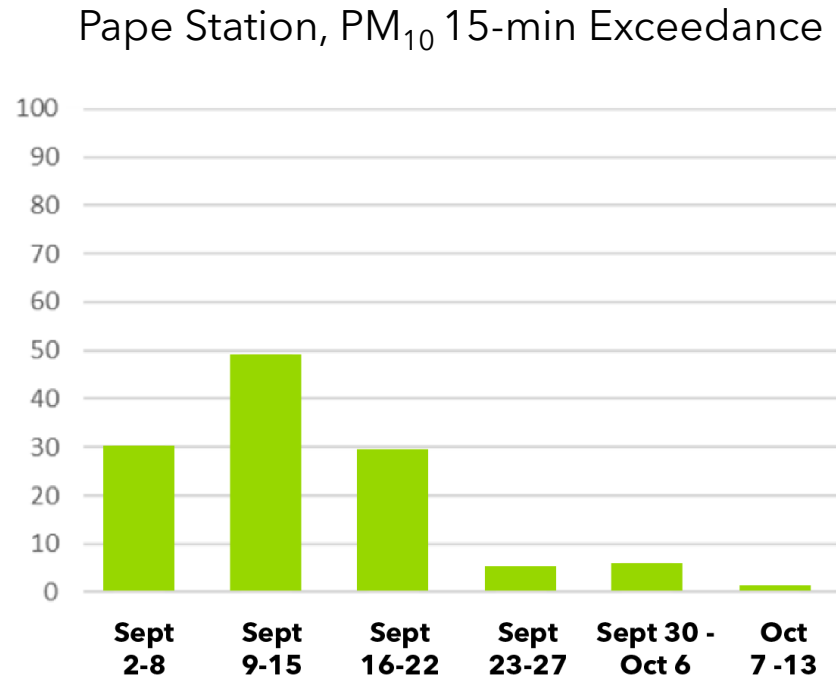
Registered Exceedances at Noise Receptors: September 2024

No	Day/Time of Exceedances	Detail	Location	Source	Corrective Action	Complaint Received (Y/N)
1	Friday, September 6 - nighttime and next day early morning till 2 AM	Noise	Gertrude Pl, Danforth Ave and Pape Ave	Slurry Wall Milling Operations	Note 1 : Contractor investigated and confirmed exceedances were minor Contractor continued to monitor while works continued	N
2	Saturday, September 7 - Day time	Noise	Gertrude Pl	Utility Works along Gertrude Avenue	Note 1	N
3	Monday, September 9 - morning	Noise	Gertrude Pl	Guide Wall Preparations at Gertrude	Additional noise mitigation measures have been installed at Gertrude upon site boundary establishments	N
4	Wednesday, September 11 - early morning	Noise	Danforth Ave	Slurry Wall Milling Operations	Note 1	N
5	Friday, September 13 - nighttime	Noise	Gertrude Pl, Danforth Ave and Pape Ave	Slurry Wall Milling Operations	Note 1	N
6	Monday, September 16 - nighttime, next day early morning till 2 AM.	Noise	Danforth Ave	Slurry Wall Milling Operations	Note 1	N

Registered Exceedances at Noise Receptors: September 2024

No	Day/Time of Exceedances	Detail	Location	Source	Corrective Action	Complaint Received (Y/N)
7	Friday, September 20 - nighttime and next day early morning until 2 AM	Noise	Gertrude Pl, Eaton Ave, Danforth Ave and Pape Ave	Slurry Wall Milling Operations	Note 1	N
8	Saturday, September 21 - Morning	Noise	Gertrude Pl, Eaton Ave, Danforth Ave and Pape Ave	Platform and Guide Wall works	Note 1	N
9	Wednesday, September 25 - early morning	Noise	Danforth Ave	Slurry Wall Milling Operations	Note 1	N
10	Friday, September 27 - nighttime and next day early morning until 2 AM	Noise	Gertrude Pl	Slurry Wall Milling Operations	Note 1	Y (no time was specified - general inquiry)
11	Saturday, September 28 - Morning	Noise	Gertrude Pl	Storm sewer Relocation works & Guide Wall Preparations	Storm sewer activity has been completed on this date and additional noise mitigation measures have been installed at Gertrude upon site boundary establishments	N

Update on Dust Control Incident in September



- Reduction of number of exceedances by introducing additional measures during September, including:
 - Increased concrete paving within site boundaries.
 - Increase usage of dust mitigation measures extended at outside of the site entrance and exits.
 - Increase the street sweeping and flushing frequencies.

Action Log

Action Log

#	Questions Asked / Action Item	Response/Resolution	Due Date / Status
1	To work with the City to further investigate the underlying cause of the water main break.	<ul style="list-style-type: none"> The water main break was unrelated to a leaking hydrant nearby to it. The hydrant leak was repaired as soon as it was discovered. There was a blowout on the top of the watermain a few meters north of the hydrant. This blowout was unrelated to Ontario Line construction, as confirmed by the City of Toronto. It was investigated and repaired by Toronto Water and water service was restored to the street at about 3:00pm Sunday September 29, 2024. 	
2	To address the presence of permanent power installation and the removal of generators on-site.	<ul style="list-style-type: none"> Details of the generator replacement can be found in this slide deck starting at slide #14. 	
3	To look into if discussions between Metrolinx and the developer of the proposed condo residence at Pape and Danforth are publicized.	<ul style="list-style-type: none"> These meetings are internal meetings between Metrolinx and the developer to ensure that any future construction activities do not encroach on the Pape station construction for the Ontario Line. They are not public in nature. The City of Toronto has City Planning applications in from the private developer at this location (NE corner of Pape-Danforth). Additional information about this private sector application can be found at the City's Application Information Centre (AIC) website. This is an example entry for this area: Application Information Centre - 654-656 DANFORTH AVE & 658-668 DANFORTH AVE 	
4	To review suggestions for enforcement when over-parking is observed on Eaton.	<ul style="list-style-type: none"> GIP has informed all subcontractors that they must follow parking laws. GIP is proactively reaching out to our subcontracts if they see any parking issues. 	



Discussion

